

Morimoto-Togashi Fault zone and Kanazawa Castle

Kanazawa is a one of the traditional cities in Japan. A major active of the Morimoto-Togashi Fault Zone runs on the northeastern side of the Kanazawa castle, which was found in the Edo era. Landform along the fault zone is not sharp scarp but gentle slope. We will go down along this gentle flexural scarp in the downtown to Omicho Market. Many foods, including fish, vegetables, have gathered here for every season. People call it as “the kitchen of Kanazawa”. After leaving Omicho Market, we will walk through a pass between the Kanazawa castle and the Oyama Jinja (Shrine). The Oyama Jinja enshrines one of a lord of Kaga domain, Toshiie Maeda, who was a excellent “samurai” and established the base of Kanazawa and Kaga domain. Our walk will end here. You can entre the Kanazawa castle if you are interested (Entrance fee is 320 JPY).



Figure 2 Map of the Morimoto-Togashi Fault Zone. (HERP, 2013)

Seasonal Foods

Ishikawa prefecture is overflowing with wonderful ingredients such as freshly caught seafood and vegetables grown carefully in rich earth. This bounty comes together under one roof at Omicho Market, the place where you can find delicious foods all year round.

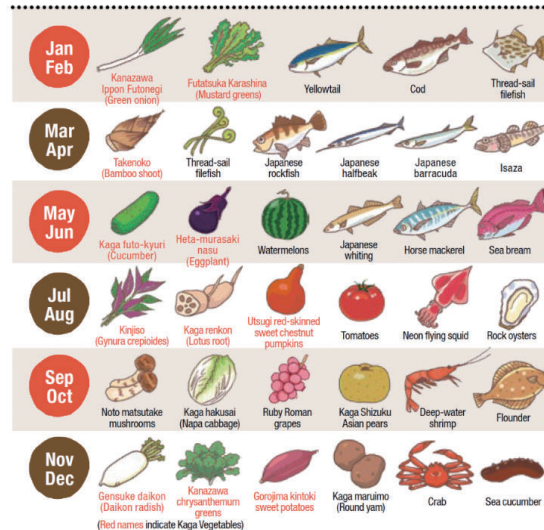


Figure 3 Seasonal foods at the Omicho market.



Figure 4 Statue of Lord Toshiie Maeda at the Oyama Jinja

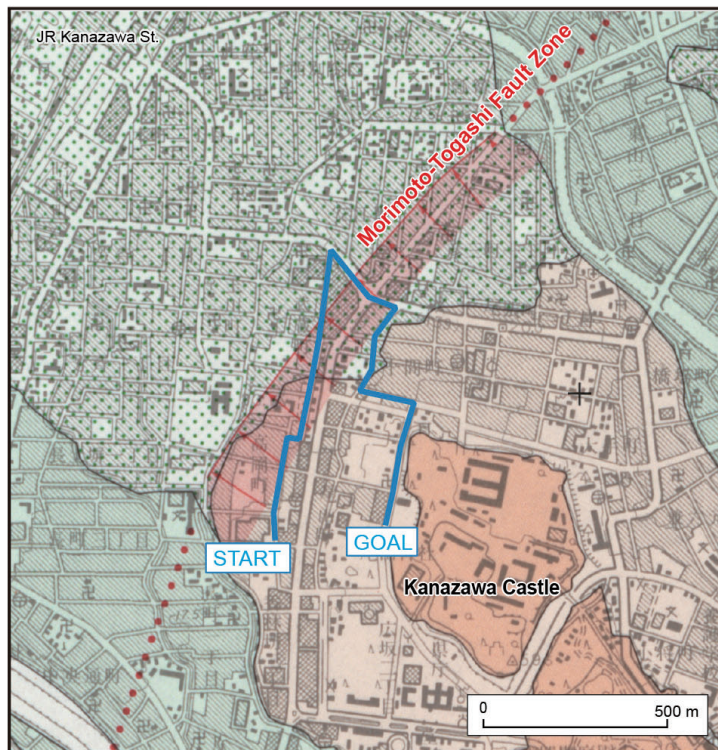


Figure 1 Route map of short walking near the Kanazawa castle. Base map is a active fault map of Kanazawa area



Figure 5 Map of the Kanazawa castle.